

Your Child's Bus Pass

Front of Bus Pass

2019-2020
Bus Pass

Northern Gateway
Public Schools

Name: Student Name
School: PHP
Grade: 2

120A AM Home

PBS to PHP

111

Your child's name, school and grade for 2019-2020

Designated (#) of the bus your child will ride in the morning from home

Your child's Transfer Site School

Your child's school

Designated (#) of the bus your child will ride to Transfer Site School

Back of Bus Pass

PM

111

PHP to PBS

120A

Designated (#) bus your child rides from school to Transfer Site School

Your child's school

Your child's Transfer Site School

Designated (#) of bus your child will ride from the Transfer Site School to home

Schools are abbreviated as follows:

- École St. Joseph - SJ
- École St. Mary - SM
- Hilltop High - HTH
- Pat Hardy Primary - PHP
- Percy Baxter School - PBS
- Whitecourt Central School - WCS

Why?

A review of the busing service for rural students to Whitecourt schools was conducted to identify areas of potential improvement and increased efficiency in transporting students to and from school. The addition of Transfer Site Schools is expected to streamline rural ride times.

Rural Buses (Transfer Site Schools Apply)

| | |
|---|----------------|
| Arrive at PBS, HTH and WCS Transfer Site Schools to exchange students | 8:35 AM |
| Students arrive at all Whitecourt schools | 8:40 - 8:55 AM |
| School day commences | 9:00 AM |
| School day ends | 3:15 PM |
| End of day transportation commences | 3:20 PM |
| Buses arrive at PBS, HTH and WCS Transfer Site Schools to exchange students | 3:30 - 3:35 PM |
| Transfer of students is complete and students begin their ride home | 3:40 PM |

Town Buses (Transfer Site Schools do not apply)

| | |
|----------------------------|----------------|
| Students arrive at schools | 8:30 - 8:55 AM |
| School day commences | 9:00 AM |
| School day ends | 3:15 PM |
| Students begin ride home | 3:20 - 3:45 PM |

Whitecourt Schools

Transportation Guide to Transfer Site Schools 2019 - 2020



For more information please contact the Transportation Department:

Toll free: 1.888.785.3396
Direct: 780.778.2800
Email: transportation@ngps.ca

Hilltop High Transfer Site School

01 8:35 am

Students who ride rural buses arrive at Hilltop High Transfer Site School



02 8:35 am

Students disembark and are assisted by a supervisor to the designated (#) bus on their pass



03 8:40 - 8:45 am

Buses leave for their designated schools

55 then goes to PHP and WCS



103 then goes to SJ



104 then goes to PBS and WCS



114 then goes to SM



115 then goes to SJ



Percy Baxter Transfer Site School

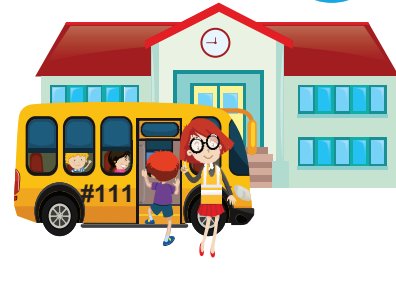
01 8:35 am

Students who ride rural buses arrive at Percy Baxter Transfer Site School



02 8:35 am

Students disembark and are assisted by a supervisor to the designated (#) bus on their pass



03 8:40 - 8:45 am

Buses leave for their designated schools

107 then goes to SM



111 then goes to PHP



121 then goes to WCS



122 then goes to HTH



118 then goes to SJ



Whitecourt Central Transfer Site School

01 8:35 am

Students who ride rural buses arrive at Whitecourt Central Transfer Site School



02 8:35 am

Students disembark and are assisted by a supervisor to the designated (#) bus on their pass



03 8:40 - 8:45 am

Buses leave for their designated schools

112 then goes to SM and PBS



113 then goes to SJ



116 then goes to PHP and HTH



120 then goes to HTH

